

AIR CLAM X

Automatic opening

- **Bottom plate with inflating membrane 40 x 50 cm**
- **Relief adjustment (buttons, zip, pockets...).**
- Very high pressure.
- Perfect distribution of pressure and heat.
- Effortless closing
- **2 years Guarantee** on the machine.
- **10 years Guarantee** on heating element.
- Manufactured in France.

Inflatable membrane

New design

« YOU MUST SHOW IT ! »

Technical characteristics

Plates Sizes	400 x 500 mm
Weight	61 kg
Pressure	102 gr/cm ² / 0.1 bars 204 gr/cm ² / 0.2 bars 408 gr/cm ² / 0.4 bars 510 gr/cm ² / 0.5 bars
Max Temperature	220°C
Power Supply	230 V
Electric Power	2500 W
Amperage	11 A

Settings



Electronics developed by Sefa.

Accurate and fast regulation (PID control) for a wide range of heat transfer products : Flex, lock, sublimation, screen printing transfer.



Easy interface :
Temperature and pressing time
with Stop Cycle function

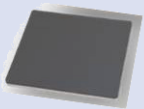
From 0 to 570 sec (precision +/- 1%).
From 0 to 220°C (précision +/- 1%).

Temperature rising time from 0 to 180°C : 15 mn.

Accessories



Table TAB-PRO2 EXT:
Strong support table, perfect
for Sefa presses.
With retractable extensions on
each side.



Junior plates kit
(On request)

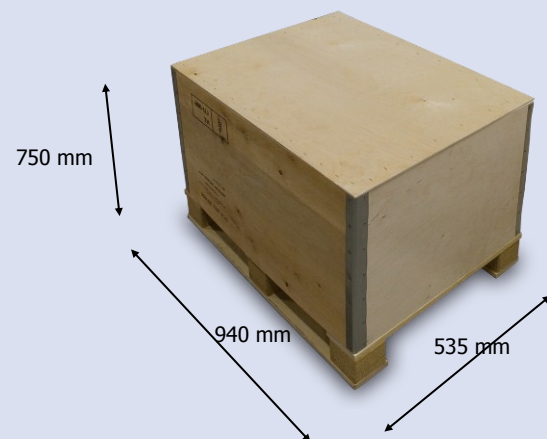
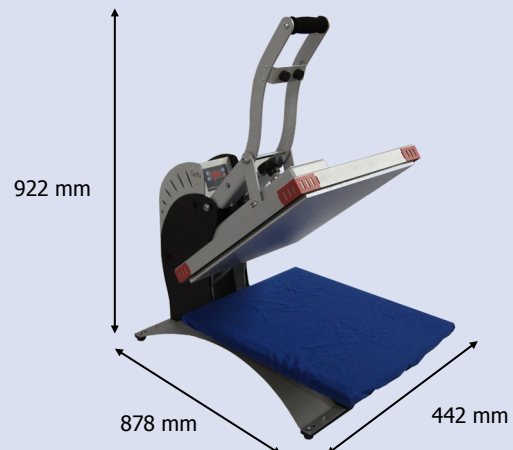


Cover HOU-50 :
Hight temperature resistant
NOMEX®

Softer and gliding surface to
easily put your textile on the
plate.

Protecting the foam as well.

Dimensions



Box weight CAI-011 : 20kg